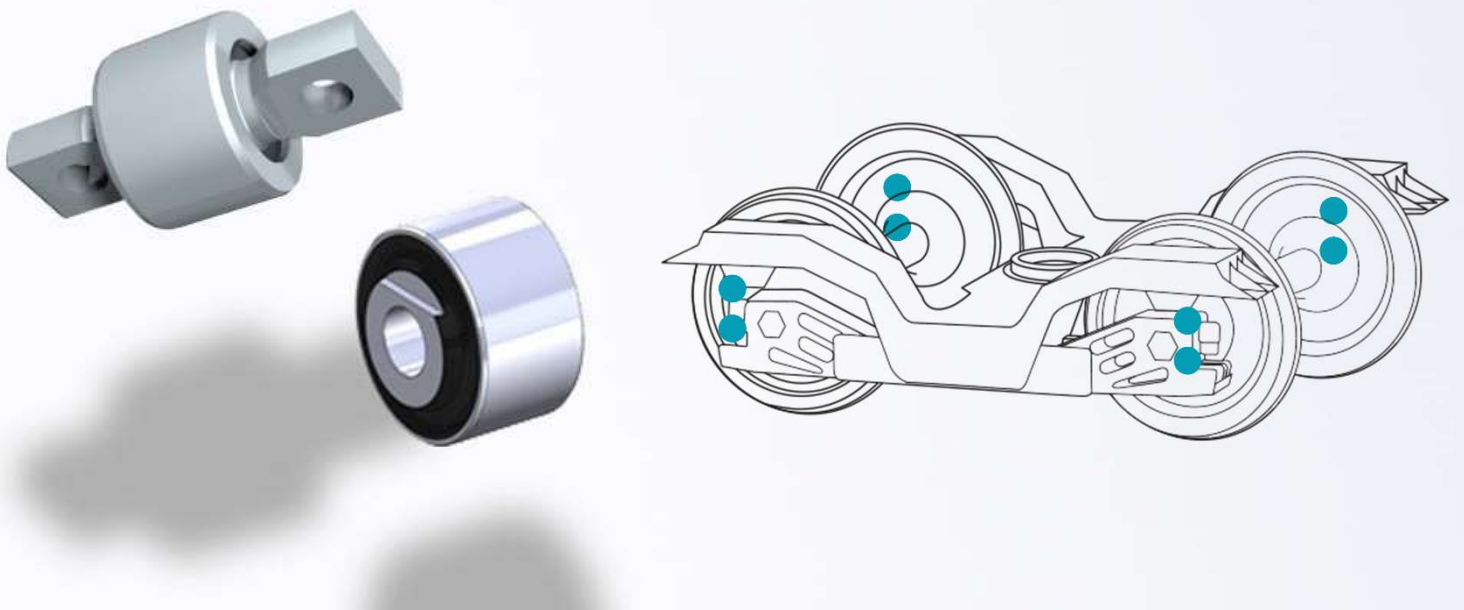


## KNUCKLE JOINTS ROTULES

Anti-roll Bar, Car-bogie Transmission  
*Barre anti-roulis, entraînement caisse-bogie*



- » Optimal absorption of axial, radial and torsional movements as well as cardanic deflections for maintenance-free joints which are twistingly used.
- » High operational safety and maintenance-freedom.
- » *Les rotules acceptent de fortes charges radiales tout en permettant les mouvements de torsion axiale et de torsion conique.*

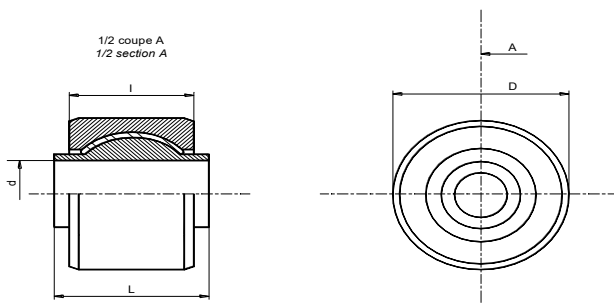


Fig. A : M1201 – M1203 – M1204 – M1234 – M1416

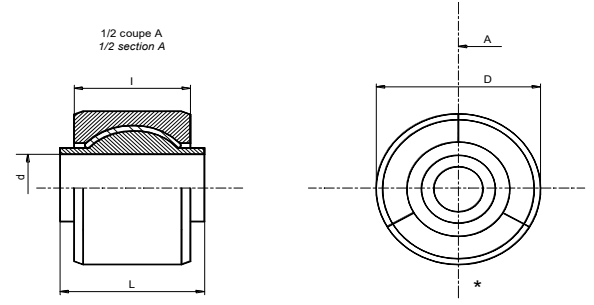


Fig. B : M1248 – M1257 – M1446

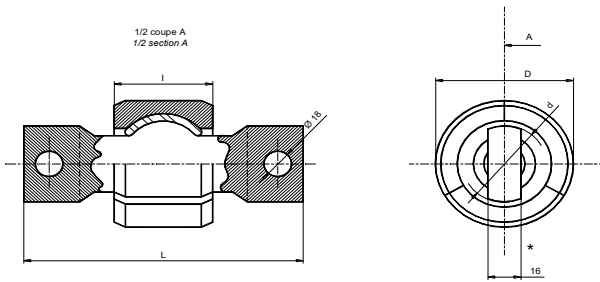


Fig. C: M1410 – M1415

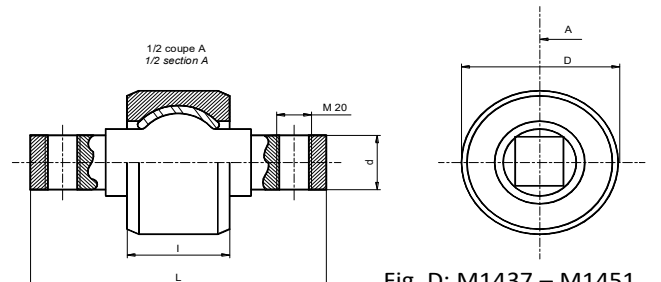


Fig. D: M1437 – M1451

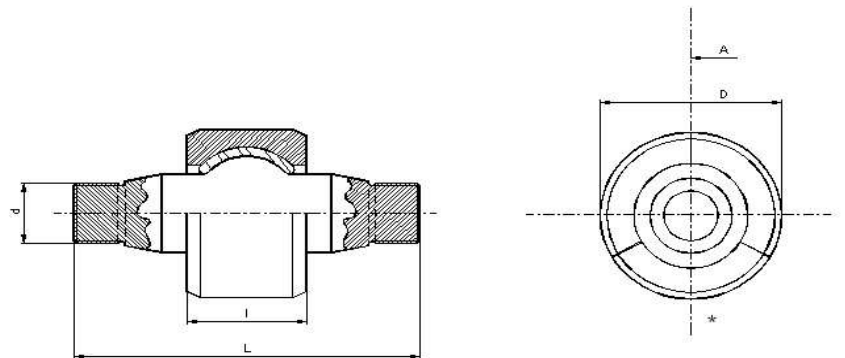


Fig. E: M1403 – M1420

Reference	Fig.	∅ D	∅ d	L	l	en- traxe	FR	KR	α	Kα	β	Kβ	FA	KA
		mm	mm	mm	mm	mm	daN	daN/mm	°	m.daN/°	°	m.daN/°	daN	daN/mm
M1201	A	90	30	76	70		10500	11500	10	3 +/-15%	7	3,15	2100	
M1203	A	66,67	24	54	47,6		5000	6750	9	1,12 à 1,88	4	3,5	3000	
M1204	A	50	22	36	29		1000	2500	7	0,5	6	1		
M1234	A	100	44	114	87		10000	2500	5	4,35	5	5,5		
M1248	B	62	35	35	36		5800	1850 +/-15%	12	0,75	10	0,433		184
M1257	B	67	35	35	36		1200	1400 à 2100	15	0,65	15	0,42		
M1410	C	66,67	40	135	47,6	96	2544	5450 +/-13,5	11	1,3 +/-0,13	10	1,25		
M1415	C	90	46	172	70	130	3450	14000	8	4,5	8	5,3		
M1416	A	127	48	120	101,6		8000	9500	11	12	7	8		
M1437	D	90	34 x 38	170	59	130	2200	Courbe curve	9	0,68	9	0,25		
M1446	B	95	30	76	59		8400	courbe curve	9	1,4	9	0,62		
M1451	D	100,2	42 x 32	180	75		5000	11000 +/-2200	5,9	6 +/-15%	3,5	10 +/-15%		950 +/-15%